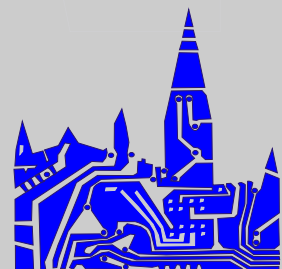


SARUM ELECTRONICS LIMITED

HOTWATER HEATER CONTROL



SARUM ELECTRONICS LIMITED
Clump Farm Ind Est.
Blandford
Dorset
DT11 7TD
Tel : 01258 480802
Fax : 01258 480803



HOTWATER HEATING CONTROL PANEL

INTRODUCTION

Easy to Install

All that is required is a mains supply and wiring to the modulating valve, frost thermostat, sensor (supplied) and fan.

Standard Features

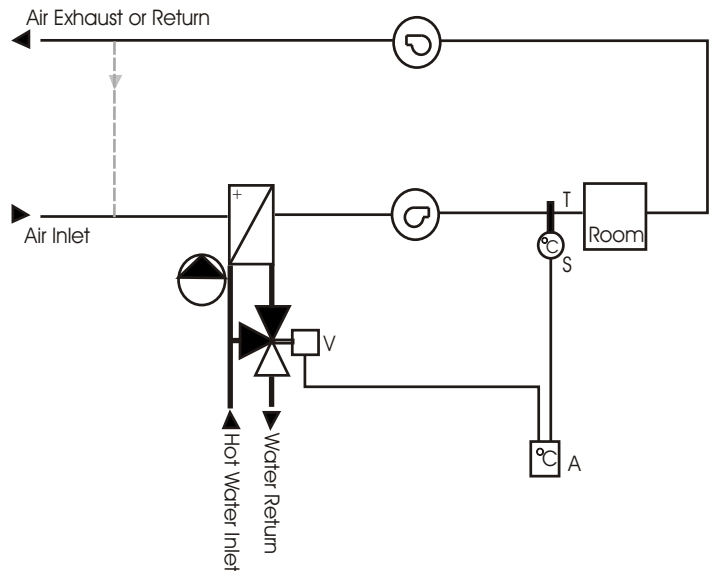
1. Fully modulating hot water heating control, 0-10 volt signal output, making the panel compatible with most 3 or 4 port heating control valves.
2. Temperature control range 0-40°C.
3. Fan output 230 volts, 1 phase, maximum full load current 10 amps.
4. A frost thermostat is provided to give warning through terminals that the heating coil needs protection. This could be by:
 - a) Start heating system
 - b) Close outside damper
 - c) Bring in electric frost heater.

NB: The control panel must be energised at the door isolator for the frost thermostat to operate. No other standard provision is made to safeguard the coil. It is the customers responsibility to ensure the coil is protected.

5. Relay with volt-free contacts for on/off output.
6. Transformer provides 24 Vac power output.
7. Separate push button switches are provided for fan and heater on/off control.
8. Each control panel is supplied in a steel enclosure and finished in an epoxy polyester coat in colour RAL7035
9. Units are suitable for internal use only.

SYSTEM DIAGRAM

Heating with LTHW Heating Coil



Functions

Temperature control

The duct sensor (S) measures the temperature (T). The controller (A) compares this value with the selected set point and adjusts the heating coil valve (V) in accordance with the difference between the two.

INSTALLATION INSTRUCTIONS

The panel is designed for wall mounting in a clean, dry environment where the ambient temperature does not exceed 30°C.

A space of approximately 50mm should be left around the enclosure to allow for heat dissipation.

Fix enclosure to the wall using proprietary fixings. Remove gland plate and drill and grommet for necessary cable entry and exits. Replace gland plate and wire panel in accordance with the wiring diagram.

All wiring must comply with current regulations and be in compliance with the Health and Safety at Work Act.

The sensor should be positioned in the return or extract air duct or if a room sensor is used it should be mounted out of direct sunlight or other heat sources approximately $\frac{2}{3}$ of the way up the wall.

CAUTION

Always ensure panel is electrically isolated before carrying out any adjustments or maintenance.

THE INFORMATION PROVIDED IN THE LITERATURE IS BELIEVED TO BE ACCURATE (SUBJECT TO CHANGE WITHOUT NOTICE), HOWEVER, USE OF SUCH INFORMATION SHALL BE ENTIRELY AT USER'S OWN RISK.